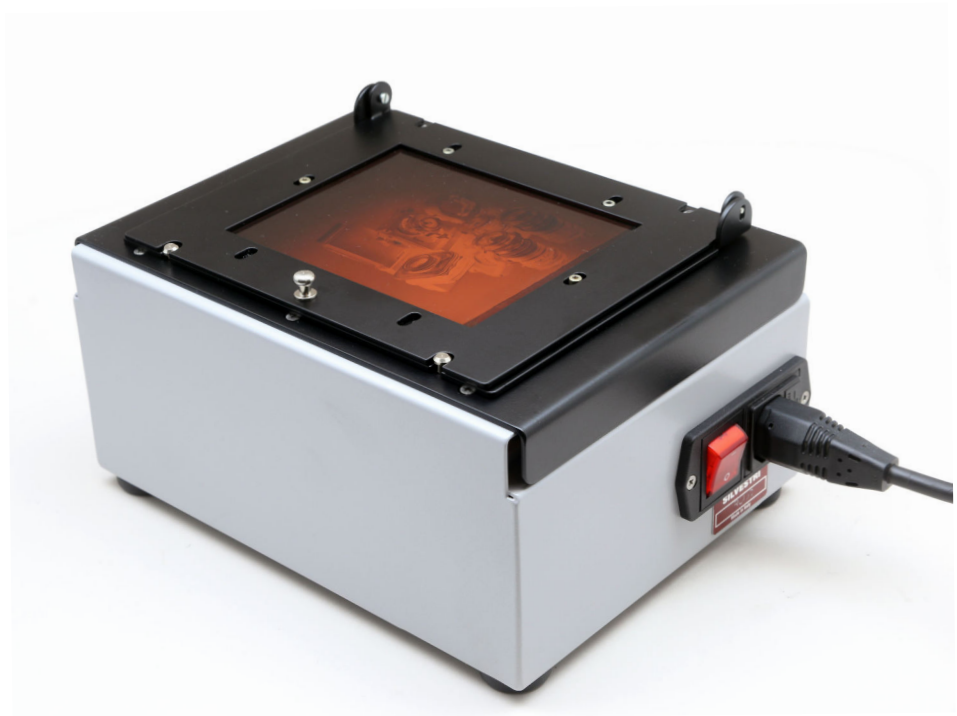


REPRO LIGHT BOX

REPRO LIGHT BOX is a device designed for contactless reproduction of B /W and colour transparencies. It allows the reproduction of transparencies on film or plate in 4x5 "and smaller formats.



The high quality lighting is provided by high colour rendering CRI 95 LEDs, the Light Box has excellent heat dissipation, the light surface is not in contact with the film and this improves the image quality and reduces dirt and heat on the subject. With modern cameras or digital backs the reproduction becomes fast and of excellent quality. The Repro Light Box can be used in combination with a commercial stand or with its specific support, the Repro Stand code RE0005.

Technical details

- 220V power supply
- Shuko switch with protection fuse.
- Quick coupling system for format exchange.
- Size: 22.5 x 17.5 x 11.1cm.
- Weight: Kg. 1,9
- Film holders available in sizes: 4x5 ", 6x9, 6x7, 4.5x6 cm. and 24x36 mm.
- Code RE0010

FILM HOLDERS for Rebro Light Box



The film holders for REPRO LIGHT BOX are designed to hold the flattened film in place for the duration of the exposure, ensuring perfect flatness and centering.

Book opening with reference points for positioning the film.

Quick replacement with register system with 4 reference points. Snap-in replacement makes it easy to switch between formats.

Available sizes: 4x5 ", 6x9cm, 6x7cm, 6x6cm, 4.5x6cm, 24x36mm and 24x36mm frames.

Technical Details

- External dimensions: 18 x 14.5 x 2 cm.
- Weight: 115 gr.
- Code RE0020 4x5 inches
- Code RE0022 6x9 cm.
- Code RE0024 6x7 cm.
- Code RE0030 6x6 cm.
- Code RE0026 4.5x6 cm.
- Code RE0028 24x36 mm.
- Code RE0032 24x36mm frames.